



MARKING SYSTEMS



# IMPACT PRESSES

- MANUAL MACHINES
- PNEUMATIC MACHINES
- IMPACT UNITS
- MICRO
- IMPACT MECHANISM
- ACCESSORIES
- SPECIAL APPLICATIONS



Easiness



Flexibility



Low cost effective

## **AUTOMATOR INTERNATIONAL Marking Systems**

### **IMPACT MARKING**

Impact and roller marking machines available as manual, pneumatic, electro-pneumatic models for permanent marking

### **HOT MARKING**

Hot marking for products such as leather, plastic, paper, wood, cloth, with or without colour

### **MULTI PIN MARKING**

Highly sophisticated and very fast computerised systems

### **SINGLE PIN MARKING**

Versatile and technologically advanced systems for marking text or logos in an arc, angle, or straight line, via a PC

### **READING AND TRACKING**

Reading via a camera and processing of the matrix OCR computerised marking

### **TAG MARKING**

Wide range of manual and computerised systems

### **LASER MARKING**

Laser systems using Nd Yag lamp, Diode or CO<sub>2</sub> source to mark any material and shape

### **ELECTRO-CHEMICAL MARKING**

Etching process for permanent identification of metal surfaces through an engraved stencil

### **HYDRAULIC MARKING**

Hydraulic systems to mark steel chassis, bars, railings, beams

### **SCRIBE MARKING**

Computerised drag marking machines to mark by "scratching" the surface, without causing any deformation or noise

### **SPECIAL APPLICATIONS**

Project and realisation of special systems for marking, identifying, tracking

### **READING AND DECODIFICATION**



Datamatrix code

### **The Automator brochures collection**



# AUTOMATOR<sup>®</sup> INTERNATIONAL

presents its extensive range of standard and special machines for marking, stamping, identifying, punching, numbering, lettering etc. ... in other words for leaving an indelible and permanent mark on any surface or product whatsoever. Impeccable quality and the highest technology are the basis for our ability to meet the most demanding and varied requirements of our customers, whatever branch of industry they may come from.

The extensive range which constitutes the AUTOMATOR program provides the highest productivity using the latest production processes.

More than 50 years' experience guarantees that Automator will offer their customers an exclusive service to solve their particular marking problems.

Starting with interchangeable types and hand

stamps, through mechanical and pneumatic machines, and finally reaching the latest, most advanced and innovative computerised systems, Automator always takes a leading role thanks to the very high qualitative and technological standards it sets for itself in the international market place.

Automator is also very well represented in emerging markets overseas and in the far east.

An extremely well trained and conscientious

staff which is focused on progress and innovation to obtain the highest precision and quality for the product and

for customer service is the corner-stone of Automator's success.

Reliability is for Automator the trademark which knows no frontiers.



# MANUAL IMPACT MACHINES

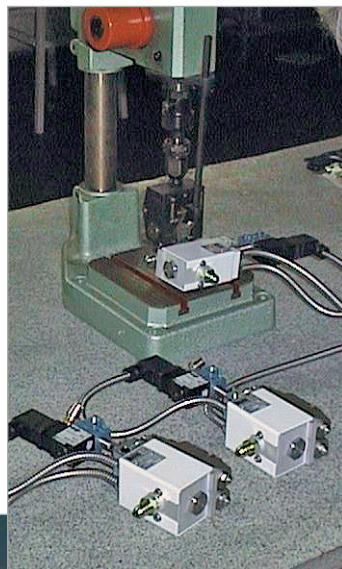
The manually operated impact presses are available in 3 versions depending upon the maximum impact force required: 5 kN, 30 kN or 65 kN. All machines offer following characteristics:

- The pre-clamping action of the press prevents material deformation
- Maximum sensitivity and accuracy
- Consistent depth of mark even for components with large variations in tolerance
- Exact pressure setting from 0 kN up to the maximum allowable for the model
- Easy accessibility for different sizes of component thanks to the large daylight
- High production rates
- Enormous range of accessories, such as types, typeholders, engraved dies, numbering heads, all of the highest quality )

Furthermore, the impact presses can be used for numerous applications apart from marking, such as riveting, assembling, inserting, press-fitting etc.



**Mod.  
MB 15**



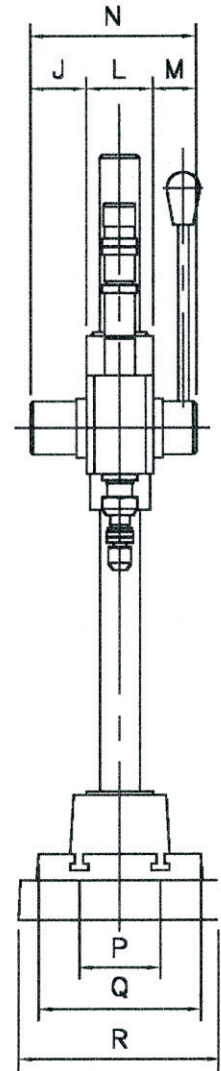
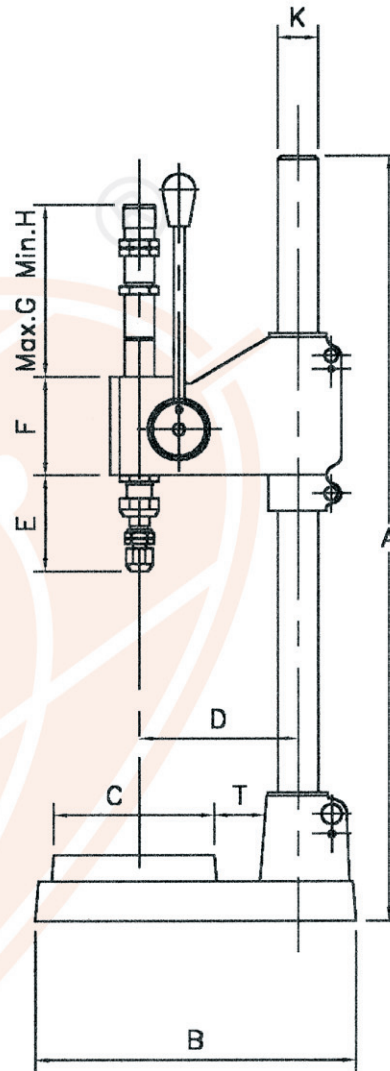
**Mod.  
MB 20**



# Mod. MB 32



## MECHANICAL DRAWING



We reserve the right to amend specifications without notice, you can download the last release on our site at: <http://www.automator.com/Download.asp>

### Technical features:

	MB15	MB20	MB32*
Impact range	500 kg (5 kN)	3000 kg (30 kN)	6500 kg (65 kN)
Daylight	0-260 mm	0-330 mm	0-370 mm
net Weight	10 kg	33 kg	99 kg
Spigot size	Ø8x32 mm	Ø10x38 mm	Ø16x48 mm
T nut(Din 650)	6 mm	10 mm	12 mm
Overall stroke	30 mm	60 mm	100 mm
Pre-travel	8 mm	18 mm	22 mm
Useable stroke	22 mm	42 mm	78 mm

### Dimensions (mm):

	A	B	C	D	E	F	G	H	K	J	L	M	N	P	Q	R	T
MB15	450	210	100	112	50	59	130	110	30	29	48	32	109	50	100	132	38
MB20	650	309	160	160	110	102	180	160	42	57,5	66	42,5	166	80	160	205	45
MB32*	850	443	220	230	150	180	360	325	70	66,5	106	61,5	234	120	220	280	70

\* Model furnished with wheel

# PNEUMATIC IMPACT MACHINES

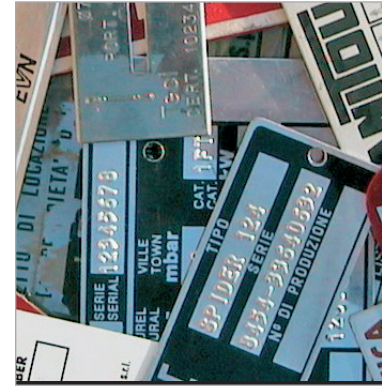
The pneumatic impact presses are available in 3 versions depending upon the maximum impact force required: 6 kN, 35 kN and 75 kN. All machines offer the following characteristics:

- The pre-clamping action of the press prevents material deformation
- Maximum sensitivity and accuracy
- Consistent depth of mark even for components with large variations in tolerance
- Exact pressure setting from 0 kN up to maximum allowable for the model
- Easy accessibility for different sizes of component thanks to the large daylight
- Double acting pneumatic cylinders increase operating speeds
- Simple integration into production lines
- Enormous range of accessories, such as types, typeholders, engraved dies, numbering heads, all of the highest quality

Furthermore, the impact presses can be used for numerous applications apart from marking, such as riveting, assembling, inserting, press-fitting etc.

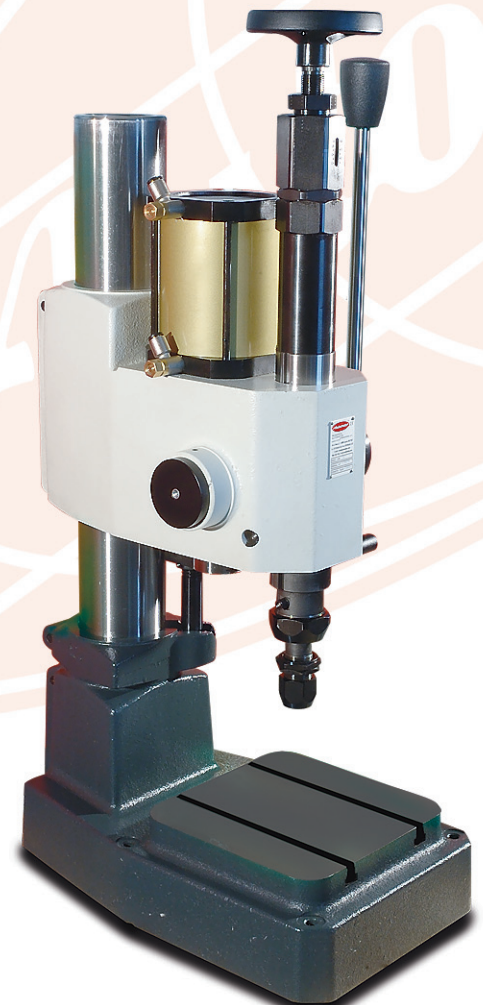


Mod.  
MB 19



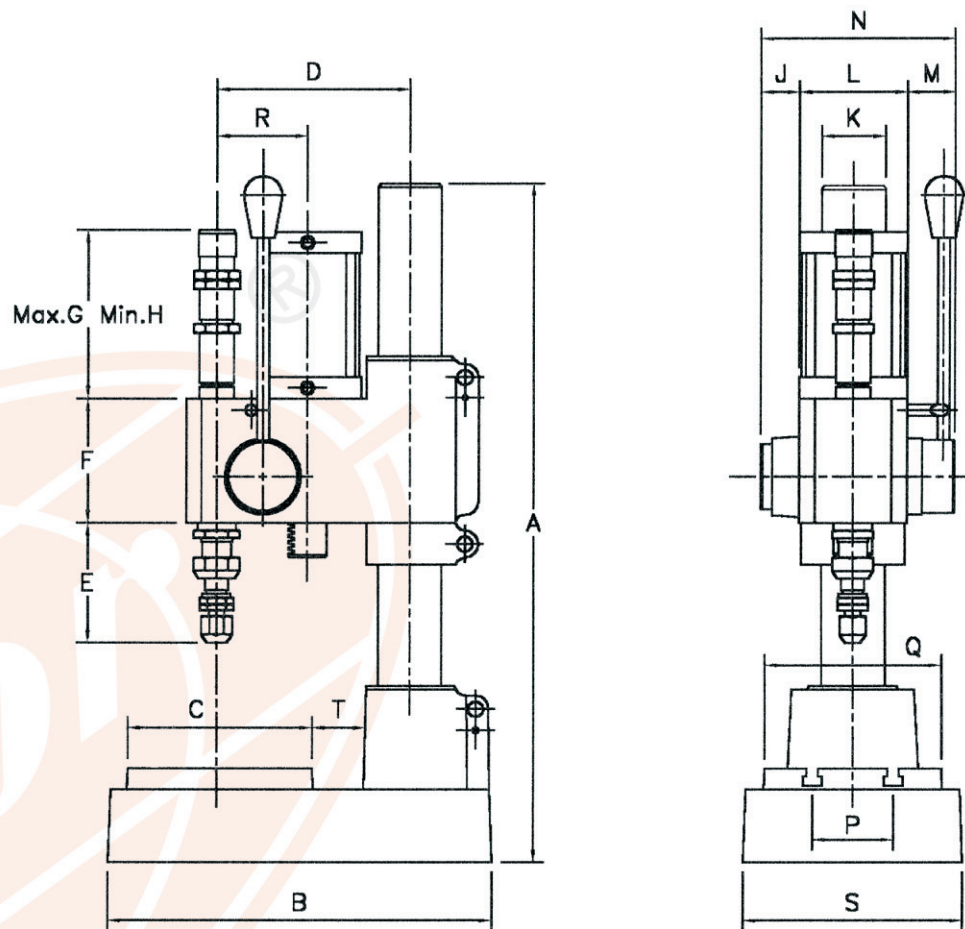
Mod.  
MB 21

Mod.  
MB 35





# MECHANICAL DRAWING



We reserve the right to amend specifications without notice, you can download the last release on our site at: <http://www.automator.com/Download.asp>

## Technical features:

	MB19	MB21	MB35*
Impact range	600 kg (6 kN)	3500 kg (35 kN)	7500 kg (75 kN)
Daylight	0-175 mm	0-270 mm	0-300 mm
Net weight	14,5 kg	53 kg	162 kg
Air connection	1/8 Gas	1/4 Gas	1/4 Gas
Spigot size	Ø8x32 mm	Ø10x38 mm	Ø16x48 mm
T nut (Din 650)	6 mm	10 mm	12 mm
Overall stroke	30 mm	60 mm	85 mm
Pre-travel	8 mm	18 mm	22 mm
Useable stroke	22 mm	42 mm	63 mm
Air pressure (Max)	4 bar	6 bar	6 bar
Air consumption per stroke	0,5 dm <sup>3</sup> (a 4 bar)	2,3 dm <sup>3</sup> (a 6 bar)	5,4 dm <sup>3</sup> (a 6 bar)

## Dimensions (mm):

	A	B	C	D	E	F	G	H	K	J	L	M	N	P	Q	R	S	T
MB19	350	225	110	112	45	65	120	100	36	20,5	56	34	110,5	50	110	55	138	27
MB21	600	355	176	180	120	118	160	110	60	37	102	44	183	80	168	84	208	50
MB35*	800	505	240	260	160	182	340	300	100	44	170	56,5	270,5	120	240	112	300	72

\* Model furnished with wheel

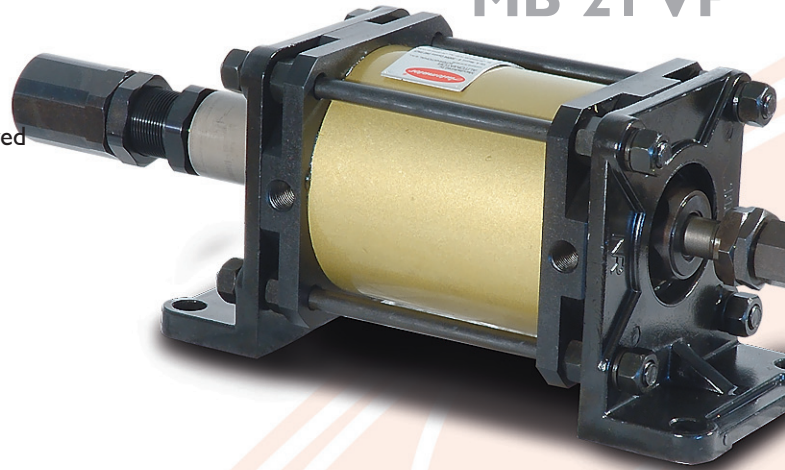
# COMPACT VP IMPACT MACHINES

The impact units of the VP series are available in 3 versions depending upon the maximum impact force required: 6 kN, 35 kN and 75 kN. All machines offer the following characteristics:

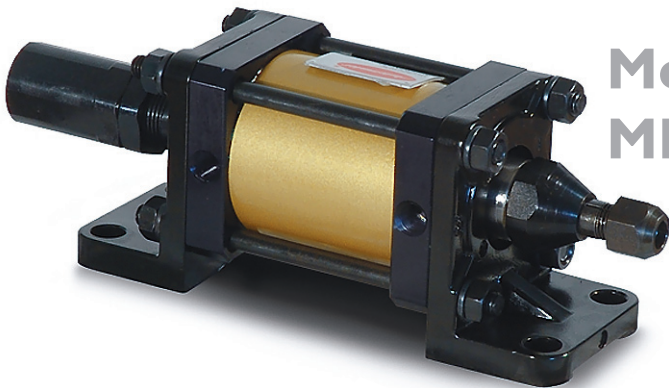
- The pre-clamping action of the press prevents material deformation
- Maximum sensitivity and accuracy
- Consistent depth of mark even for components with large variations in tolerance
- Exact pressure setting from 0 kN up to maximum allowable for the model
- Very compact design
- Double acting cylinders increase operating speeds
- Especially suitable for integration in transfer lines
- Suitable for mounting in any plane
- Impact can be released at any point within the stroke
- Enormous range of accessories, such as types, typeholders, engraved dies, numbering heads, all of the highest quality

Furthermore, the impact presses can be used for numerous applications apart from marking, such as riveting, assembling, inserting, press-fitting etc.

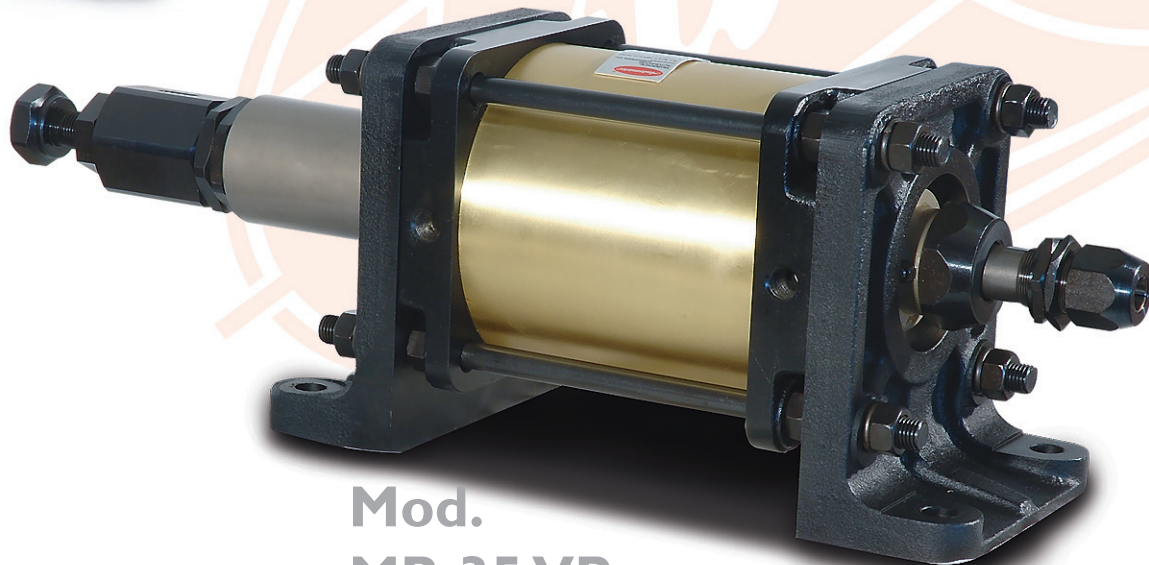
Mod.  
MB 21 VP



Mod.  
MB 19 VPN

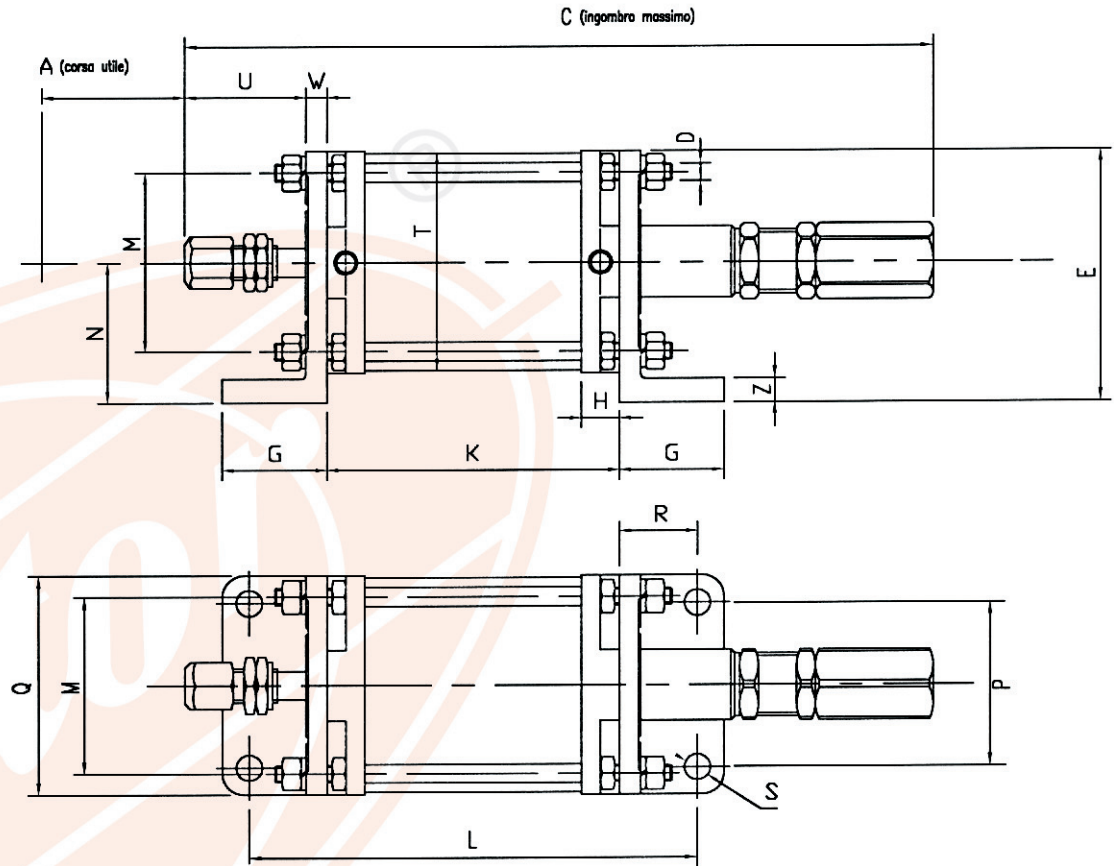


Mod.  
MB 35 VP





# MECHANICAL DRAWING



We reserve the right to amend specifications without notice, you can download the last release on our site at: <http://www.automator.com/Download.asp>

## Technical features:

	MB19VPN	MB21VP	MB35VP
Impact range	600 kg (6 kN)	3500 kg (35 kN)	7500 kg (75 kN)
Net weight	2 kg	10 kg	38 kg
Spigot size	Ø8x32 mm	Ø10x38 mm	Ø16x48 mm
overall stroke	32 mm	67 mm	110 mm
Pre-travel	8 mm	18 mm	25 mm
Useable stroke	0-24 mm	0-49 mm	0-85 mm
Pressione aria (Max)	4 bar	6 bar	6 bar
Air consumption per stroke	0,5 dm <sup>3</sup> (a 4 bar)	2,3 dm <sup>3</sup> (a 6 bar)	5,4 dm <sup>3</sup> (a 6 bar)
Air connection	1/8 Gas	1/4 Gas	3/8 Gas

## Dimensions (mm):

	A	C	D	E	G	H	K	L	M	N	P	Q	R	S	T	U	W	Z
MB19VP	24	235	M8	78	45	14	88	158	50	45	45	65	35	Ø11	60	36	10	10
MB21VP	49	395	M10	130	55	20	153	238	90	72,5	90	115	42,5	Ø14	105	64	12	12
MB35VP	85	670	M16	217	87	32	234	364	140	125	140	184	65	Ø17	170	108	27,5	24

# IMPACT SPINDLES

The impact spindles are available in 3 versions depending upon the maximum impact force required: 3 kN, 25 kN or 50 kN. All spindles offer the following characteristics:

- The pre-clamping action of the press prevents material deformation
- Maximum sensitivity and accuracy
- Consistent depth of mark even for components with large variations in tolerance
- Exact pressure setting from 0 kN up to maximum allowable for the model
- Extremely compact dimensions
- Capable of being mounted on a fixture with double acting cylinder
- Particularly suited for integration in transfer lines and capable of being mounted in any plane
- Enormous range of accessories, such as types, typeholders, engraved dies, numbering heads, all of the highest quality

Furthermore, the impact presses can be used for numerous applications apart from marking, such as riveting, assembling, inserting, press-fitting etc.



MB 15/19

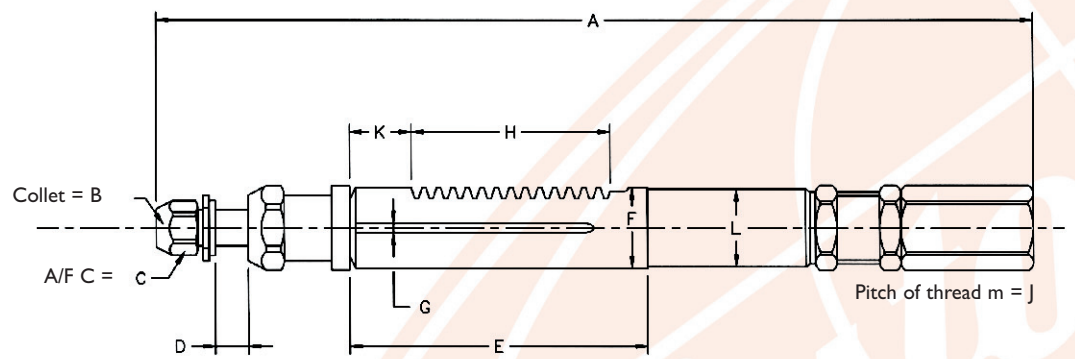


MB 20/21



MB 32/35

## MECHANICAL DRAWING



We reserve the right to amend specifications without notice, you can download the last release on our site at: <http://www.automator.com/Download.asp>

### Technical features:

	MB15/19	MB20/21	MB32/35
Impact range	500 kg (5 kN)	3000 kg (30 kN)	6500 kg (65 kN)
Nett weight	0,6 kg	2,1 kg	10,2 kg
Spigot size	Ø8x32 mm	Ø10x38 mm	Ø16x48 mm
Overall stroke	30 mm	60 mm	100 mm
Pre-travel	8 mm	18 mm	22 mm
Useable stroke	0-22 mm	0-42 mm	0-78 mm

### Dimensions (mm):

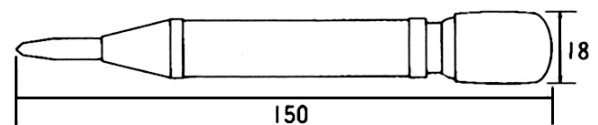
	A	B	C	D	E	F	G	H	K	J	L
MB15	240	Ø6-8	13-17	8	80	25	3	51	16	1,25	24
MB20	392	Ø10	24	17	137	36	6	94,2	21	2	34
MB32	690	Ø16	36	22	224	60	7	131,9	61	2	58

# MICRO CENTER PUNCH



	1	2	3	4	5	6	7	8
A	□	♥	▲	♁	♠	○	△	∩
B	⊞	⊞	⊞	⊞	⊞	⊞	⊞	⊞
C	⊞	⊞	⊞	⊞	⊞	⊞	⊞	⊞
D	⊞	⊞	⊞	⊞	⊞	⊞	⊞	⊞
E	⊞	⊞	⊞	⊞	⊞	⊞	⊞	⊞
F	⊞	⊞	⊞	⊞	⊞	⊞	⊞	⊞
G	⊞	⊞	⊞	⊞	⊞	⊞	⊞	⊞

Table of special marking symbols



## MICRO CENTER PUNCH

Portable marking unit. The internal impact force is triggered by pressure using the palm of the hand. The micro centre punch is practical, versatile and quick, and

has an impact force adjustable from 5-50 kg. The micro centre punch is available in black metal or in coloured plastic. Various punches are available including letters

of the alphabet, numbers in 2.5 mm. height as well as

the symbols shown in the adjacent table. Special signs and logos can also be supplied on request up to a maximum of 3 mm height.



# TWIN PUSH BUTTON SAFETY CONTROL SYSTEM

Automator offers 2 different twin push button safety systems:

**Security 1** is a twin push button safety control system to CE standards

**Security 2** is a twin push button safety control system to CE standards with an additional adjustable timer fitted to the front panel. This is particularly useful for hot marking as this can set the dwell time for the marking head.

## Technical features:

- Filtered air either lubricated or not lubricated
- Air pressure: 2-8 bar
- Temperature range: min -10°/max 60°C

## Pneumatic Elements:

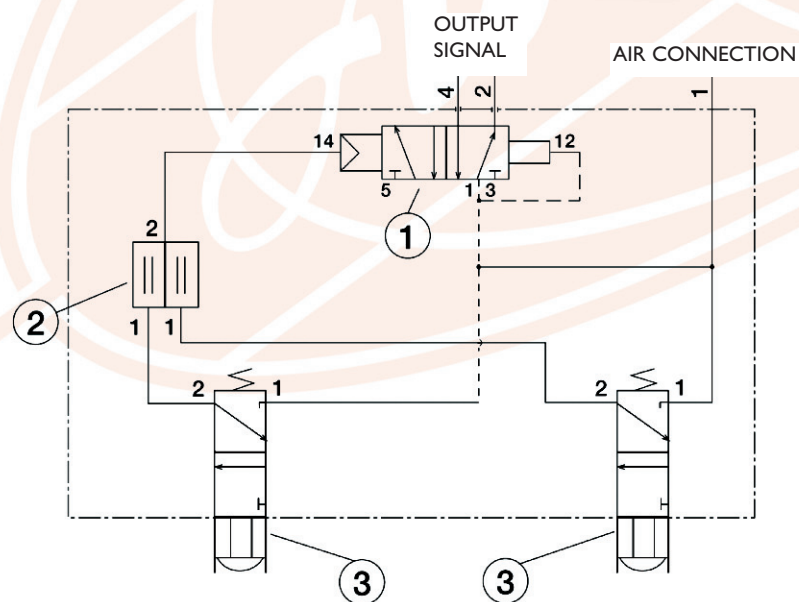
- ① Pneumatic valve
- ② Safety valve
- ③ Protected push buttons

### DECLARATION OF CONFORMITY

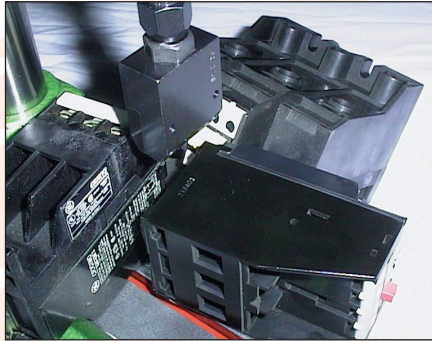
Automator International Srl • Via Meucci 8 • I-20094 Corsico (MI) declares that the twin push button safety control system Type Security 1 Code 08.156.4 conforms to the following CE norms: CE 89/392, 91/368, 93/44, 93/68 and has acquired the following registration number:

nr. 0249 AT 261

on 30.07.1996 from the Institute ANCPP Srl and registered with the Italian Ministry of Industry under no. 0302.

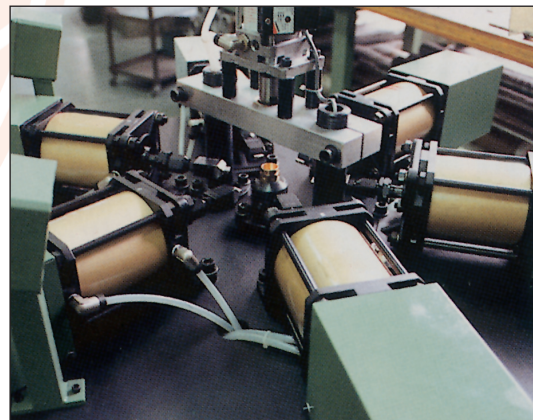


# SPECIAL APPLICATIONS



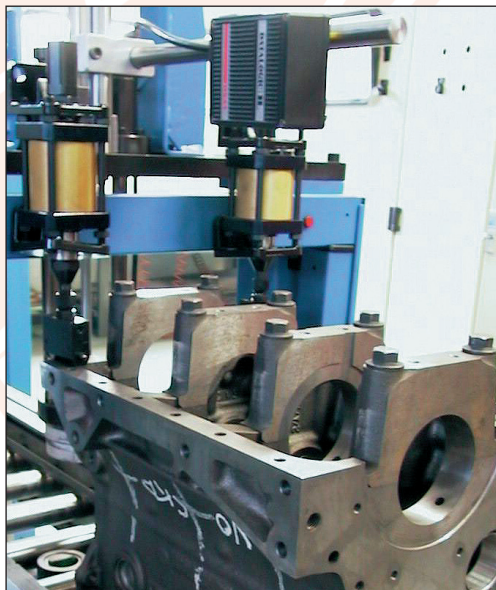
## MARKING OF ELECTRO MECHANICAL COMPONENTS

Marking of electro mechanical components with information such as electrical current, serial number, batch number. All in one operation, which means marking time of a fraction of a second and minimum costs.



## SPECIAL APPLICATION WITH IMPACT UNITS

Special equipment for the marking of hexagonal valve bodies consisting of 6 units MB21VP with the possibility of marking from 2 to 6 sides simultaneously.



## MARKING OF ENGINE BLOCKS

Two compact impact units in an automatic production line mark the two sides of an engine block simultaneously. This is required for subsequent assembly purposes.



## MARKING OF WOODEN PROFILE

The individual components for doors and windows are marked to simplify later assembly. The batch number and order number are marked.

# ACCESSORIES



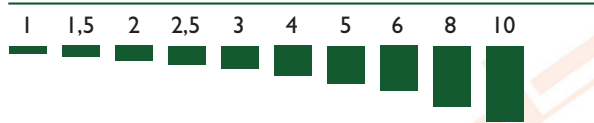
- Types of characters:
- standard sharp face
  - multi-dot
  - rounded
  - flat face
  - hot marking
  - lower case

## FONT SETS

Automator steel types are of exceptional quality, incorporating as they do 50 years' experience. They are made from specially selected steel, which guarantees a long life time. The most modern production methods ensures perfect centering and exact dimensional tolerances. Standard font sets with or without a typeholder contain:

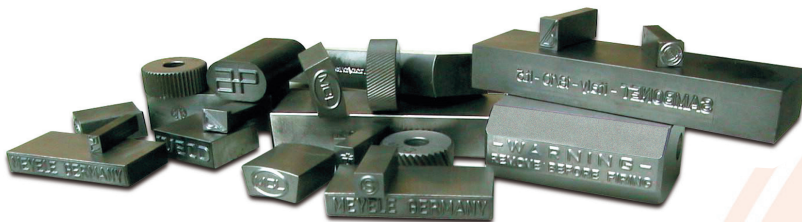
- 100 characters
- 20 blanks
- Tweezers and allen key

Height of standard character sizes

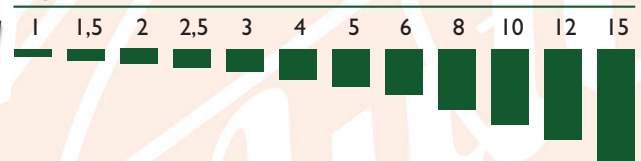


## ENGRAVED STAMPS & DIES

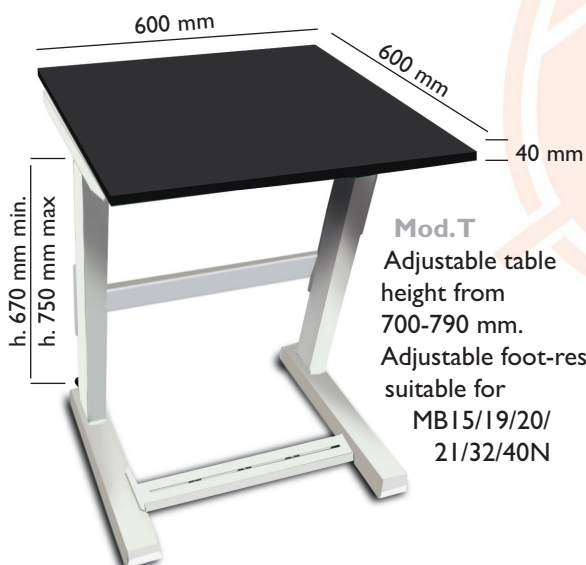
Special dies and punches to any shape with perfect representation of logos or script are made to customers' requirements from special steel. Many years of experience guarantees highest quality and closest tolerances.



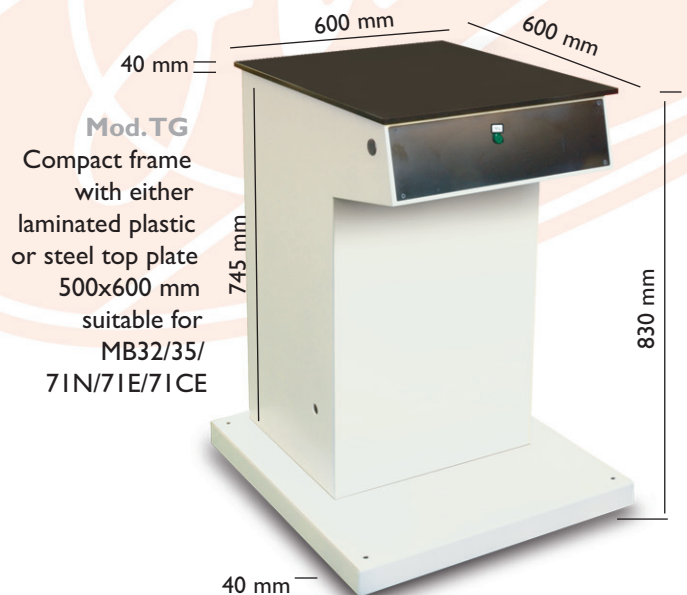
Height of standard character sizes



## TABLES



**Mod.T**  
Adjustable table height from 700-790 mm.  
Adjustable foot-rest suitable for MB15/19/20/21/32/40N



**Mod.TG**  
Compact frame with either laminated plastic or steel top plate 500x600 mm suitable for MB32/35/71N/71E/71CE

## TYPEHOLDERS

An enormous range of typeholders of both standard and special design is available to resolve any marking application.

The linear 1, 2 and 3 line typeholders as well as the circular typeholders all are provided with a tapped hole at the rear to take the required spigot. Because of this feature Automator typeholders can be mounted on any model of impact press or roller marking machine.



## SPIGOTS



At hand



Ø 16



Ø 10



Ø 8

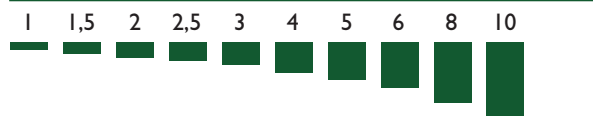
The various sizes of spigot serve to attach dies, punches, typeholders, numbering heads, etc to the appropriate marking machine. Hand held spigots are offered when you wish to mark using a hammer.

## NUMBERING HEADS

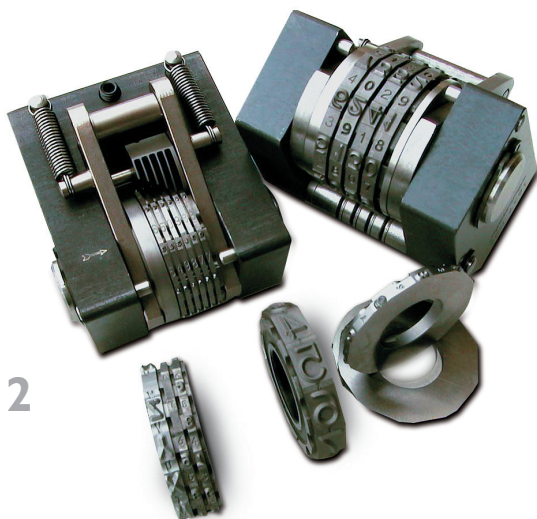
These are ideal for marking of frequently changing numbers or sequentially incrementing serial numbers; a numbering head can be supplied for every character size and shape of component. Special numbering heads with spacer wheels, slots for holding interchangeable steel types etc. can be supplied on request. Available as two models:

- MB2 automatic
- MB14 manual

Height of standard character sizes



MB 2



MB 14





**w w w . a u t o m a t o r . c o m**

Send us an e-mail to be putted in contact with our nearest specialist in marking



**MARKING SYSTEMS**

AUTOMATOR INTERNATIONAL s.r.l.  
 Via Meucci, 8 -20094 Corsico (MI) Italy • Tel. + 39-0248601445 ra. • Fax + 39-0248601503  
 info@automator.com - www.automator.com